



Diary dates

Thursday 24th November
Y13 parent teacher consultation evening

Friday 2nd December
Y12 report 1 (*emailed home*)

Wednesday 14th December
Christmas Concert

Monday 9th January - Friday 20th January
Year 13 mock examinations

Thursday 26th January
Sixth Form open evening

Message from the Headteacher



The new term has started with that classic mix of autumnal weather: one day we have clear blue skies, crisp mornings and autumnal sun lighting up the turning leaves; the next day we have dreary half-light, torrential rain and those beautiful leaves reduced to muddy sludge. As the nights close in, it can be easier to dwell more on the rain than on the sunshine.

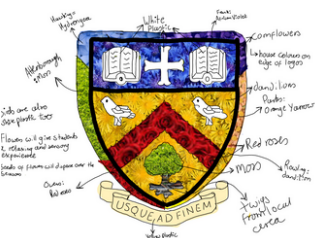
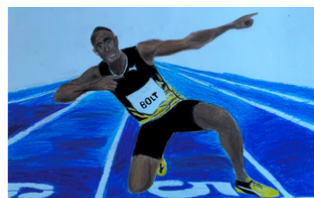
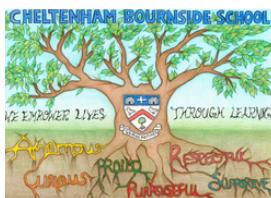
However, school life is lightening all of our days. There's already been loads happening at school – perhaps most noticeably the BBC Share your story day on Wednesday. Trips and visits and clubs and societies are in full swing and, of course, lessons are a bright spot every single day. So, welcome back: here's to a beacon of school based brightness in the wintry months ahead!

Student success

House competition winners

Congratulations to our Term 1 House Competition winners!

The full list of winners can be found on the next page.



Student success continued ...

<p>Black History Month History Competition</p> <p><i>To produce a picture, poem or sculpture inspired by an influential black individual.</i></p>	<p>Congratulations to:</p> <ul style="list-style-type: none"> • 1st place: Eirah, Year 7, Frank House, for her Rosa Parks Collage • 2nd place: Eliza, Year 11, Attenborough House, who produced an amazing pencil sketch of Harriet Tubman • 3rd Place: Lucas, Year 7, Rowling House, for his exceptional colour drawing of Usain Bolt
<p>Cheltenham Literature Festival English Competitions</p> <p>1. Write a poem about something that inspires you 2. Write a 500-word creative writing piece based on a photograph</p>	<p>Congratulations to:</p> <ul style="list-style-type: none"> • 1st place: Laura, Year 11, Frank House for her poem '<u>Small Pleasures</u>' • 2nd place: Eliza, Year 11, Attenborough House for her poem '<u>Unwanted Guests</u>' • 1st place: Lottie, Year 7, Hawkings House for her creative writing piece
<p>Golden Anniversary Garden Design Competition</p> <p><i>To design a commemorative plaque to officially open our new school garden. The winning design will be professionally made and installed as a permanent feature.</i></p>	<p>Congratulations to:</p> <ul style="list-style-type: none"> • 1st place: Freya and Lottie, Year 13 and 7, Frank House • 2nd place: Khadija, Year 12, Hawking House • 3rd place: Emily, Year 11, Parks House <p>Mike Stratford, Deputy Headteacher, said: "Thank you for all the wonderful creative entries into this competition and congratulations to Freya and Lottie for their joint entry and winning design!"</p>

Sixthformers success in the Senior Mathematical Challenge



Last month, 22 Sixth Form students attempted the Senior Mathematical Challenge, run by United Kingdom Mathematical Trust (UKMT).

The international challenge promotes solving through a 90-minute multiple-choice challenge, focusing on students' mathematical reasoning and fluency. The results have recently been revealed and to accredit the highest performers, certificates are given to those based on three thresholds: Gold (76+), Silver (62+) and Bronze (48+).

Bronze certificates were awarded to:

- Adam, Hawking House
- Alwyne, Hawking House
- Daniel, Frank House
- Daniel, Frank House
- Duncan, Owens House
- Erik, Parks House
- Josh, Rowling House
- Lacey-Mae, Owens House
- Michael, Rowling House
- Rhys, Rowling House
- Sam, Attenborough House
- Thomas, Owens House
- Tobi, Owens House (best in the year)
- Tom, Rowling House
- Victor, Frank House

Silver certificates were awarded to:

- Evie, Rowling House
- Finlay, Owens House
- Jacob, Attenborough House
- Jorja, Parks House
- Sasha, Parks House (best in the year)
- Thomas, Attenborough House

School updates

Inspire Lectures



Our next Inspire Lecture in the series is **Your Journey into Film Production** on 24th November, delivered by Adam Batchelor. Adam is an award-winning film, television and music video director, as well as a senior lecturer in film production at the University of Gloucestershire

In this session Adam will be talking about his route into the industry and the challenges and experiences within it, considerations of undergraduate and postgraduate education and the careers and pathways students might want to think about.

Please see Mr Taylor to confirm your space.

Trips and visits

There have been lots of brilliant trips and visits happening at school, including:

History: Hampton Court Palace

A-Level historians visited Hampton Court Palace, once the home of one of the most notorious English monarchs, Henry VIII. The exploration of the Palace's atmospheric corridors will help to support their knowledge of the Tudors and the English Reformation.



Geography: Brick Lane

Year 13 Geography students took a trip to East London to explore urban decline and the subsequent regeneration and gentrification of Brick Lane. Analysing its transformation from its previous de-industrialised and run-down state into the vibrant area full of street art and vintage markets that it is now well-known for. Students were challenged to collect primary data using land use and quality of the environment surveys to gain an understanding into the changing demographics, culture, and characteristics of the area.



Parking

Please be reminded that there are a number of spaces allocated for parents who have an appointment at the school. Otherwise, please refrain from using the staff carpark, particularly before school as this is causing significant inconvenience for staff members at the start of the day.

There have been a number of incidents concerning parents illegally parked at the front of the school entrance on double yellow lines.

The Highway code states "Double yellow lines indicate a prohibition of waiting at any time even if there are no upright signs. You **MUST NOT** wait or park, or stop to set down and pick up passengers, on school entrance markings (see 'Road markings') when upright signs indicate a prohibition of stopping."

Well-being and welfare for young minds

Don't just implement self-care when you're completely burned out. Make it a daily practice.

Each week, we'll be sharing a well-being resource which we hope you'll find useful as a family.

Self-care is about the things we can do to look after our own mental health. The Anna Freud Centre have collated [91 self-care strategies](#) that have been identified by young people to help other young people manage their mental health and well-being.

Community notices

Join our team

We are currently recruiting for a cleaning assistant to join our team to find out more view the [candidate information pack here](#).

A new opportunity has arisen to join our team as a school bus driver. More information on the role can be found [here](#). If you would like to apply please email your CV to lpk@bournside.gloucs.sch.uk. We will be reviewing applications on a rolling basis, so we encourage you to apply as soon as possible.

Useful links

[Sport fixtures](#)
[School calendar](#)
[What's for lunch?](#)
[Extra-curricular timetable](#)
[Careers newsletter](#)

House points

Frank

8865

Owens

8689

Rowling

8597

Attenborough

8576

Hawking

8301

Parks

7996