



## Gold DofE Trip

"I am so proud of the 28 Year 12s who undertook their practice Gold Duke of Edinburgh Expedition last weekend. They hiked in the Brecon Beacons for three days tackling huge ups and downs, it was tough conditions though dry and bright days. Nights were freezing and we woke to ice on tents. They all had an amazing time, they pulled together in their teams supporting each other when times were tough and showed real resilience. Well done everybody!" - Mrs McCormack

More photos can be seen on X [@Bournside\\_DofE](#)



## Diary dates

### w/c Mon 24th March

- KS3 Star Reading Assessment Fortnight

### Thurs 27th and Fri 28th March

- National Theatre Connections (Home performances)

### Saturday 12th April

- National Theatre Connections (Swan Theatre, Worcester)

### Monday 31st - Friday 11th April

- Year 10 and 12 Mock Examinations

### Saturday 5th - Sunday 6th April

- DofE Bronze Practice Expedition

### House points

Attenborough Frank

Hawking



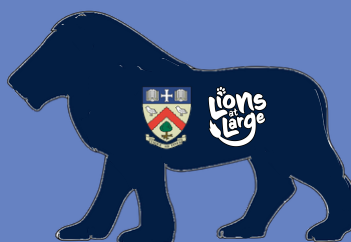
Owens

Parks

Rowling



Pre-order your Lions at Large School Charity of the Year pin badge today!  
£4 each, via MCAS



# School news and updates

## South Africa Tour Kit Sponsorship

Preparations are well underway for the South Africa Sports Tour 2025 and the team are now looking for companies to act as kit sponsors. This is the first international sports tour since 2019, and Bournside netball, football and rugby teams will be travelling to Cape Town to compete against South African schools in the Connect Festival of Unity in July.

### Sponsorship options

#### Netball dresses:

- Main sponsor (front) - Thank you [Gemini Financial Planning!](#)
- Second sponsor (back) £300 - *Available*

#### Football shirts:

- Main sponsor (front) £400 - *Available*
- Second sponsor (back) £200 - *Available*

#### Rugby shirts:

- Main sponsor (front) £850 - *Available*
- Second sponsor (back) £150 - *Available*



**GEMINI**  
FINANCIAL PLANNING

If you are interested in sponsorship, please contact Miss Goddard: [mkg@bournside.gloucs.sch.uk](mailto:mkg@bournside.gloucs.sch.uk)



## MATHS CORNER

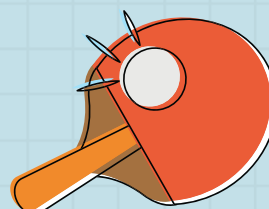
2 NEW MINI MATHS CHALLENGE EACH WEEK. COMPLETE WITH YOUR CHILD AND SUBMIT YOUR ANSWERS ONLINE TO EARN HOUSE POINTS!

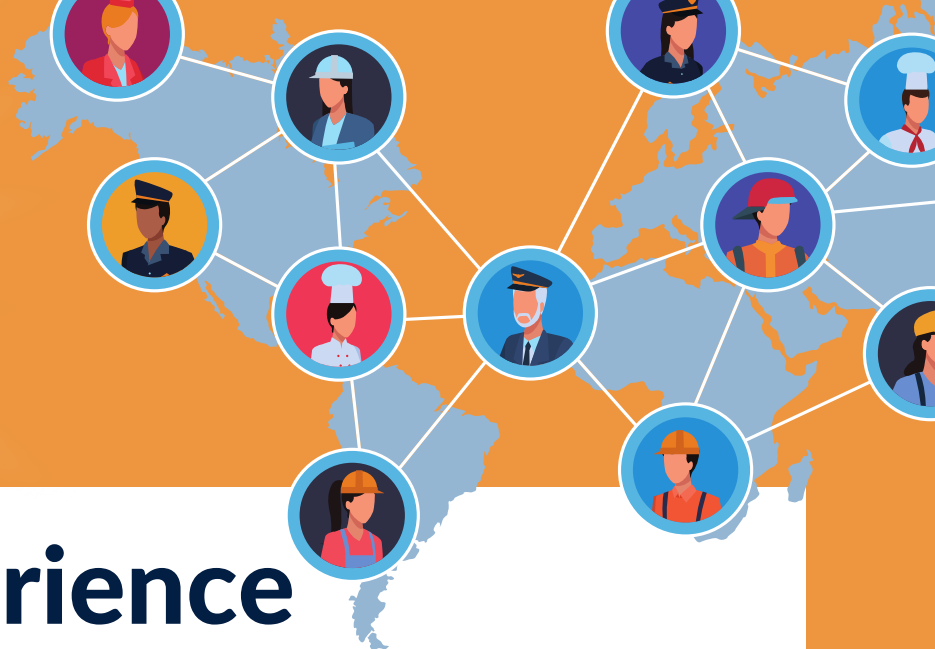


### 1. CAN YOU SOLVE THIS?

$$\begin{aligned} \text{Apple} + \text{Apple} + \text{Apple} &= 60 \\ \text{Apple} + \text{Orange} + \text{Orange} &= 30 \\ \text{Orange} - \text{Banana} &= 3 \\ \text{Banana} + \text{Apple} \times \text{Orange} &= ? \end{aligned}$$

2. A BAT AND BALL COST £1.10 IN TOTAL.  
THE BAT COSTS £1 MORE THAN THE BALL.  
HOW MUCH DOES THE BALL COST?





# Work Experience

## Parents - WE NEED YOU!

Calling all parents, near and far,  
Help our students shine like a star!  
A week of learning, skills to grow,  
But we need hosts—so let us know!

From offices to shops and more,  
Open your workplace, show them it all!  
A chance to guide, inspire, and teach,  
The future's bright—within their reach!

So, lend a hand, don't delay,  
Sign up to host a teen in a workplace  
you know today!

### Work Experience Dates



#### Year 10

Monday 14th July -  
Friday 18th July, 2025

#### Year 12

Monday 14th July -  
Friday 18th July, 2025

**OR** Monday 1st  
September - Friday 5th  
September, 2025

Can you help? Students are interested in having work placements in everything from **carpentry** to **graphic design** to **marine biology** - if you can host a student for 1 to 5 days - [please let us know](#) here:



**CHELTENHAM  
BOURNSIDE  
SCHOOL**

“Inspiring lives through learning”

# Brizen Youth Club



Springbank Community Group CiC, are providing a weekly youth club during term time of positive activities for children and young people.

Young people will be able to access a range of sessions including sports, arts and crafts, cooking, competitions and much more, as well as having a safe space to hang out with their friends.

These sessions are funded by Brizen Young Peoples Centre.

For more info contact:  
[youthwork@springbankcommunitygroup.org](mailto:youthwork@springbankcommunitygroup.org)

Sessions will be ran from:  
Brizen Young Peoples Centre, Up  
Hatherley Way, Cheltenham,  
GL51 4BB

Monday  
6-8pm  
Ages  
14-18

Friday  
5-6.30pm  
Ages  
8-11

6.30-8pm  
Ages  
11-14

£2 entry

