

**Monday 10th - Friday 14th July**

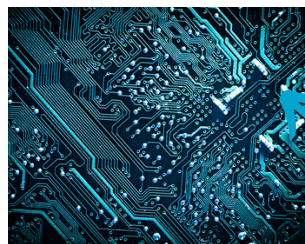
**In-school activity choices**



**CHELTENHAM  
BOURNSIDE  
SCHOOL**

### Create a newspaper

With the English team take on a role as a reporter, editor, writer, photographer and designer to create a Bournside Daily newspaper!



### Off the Grid

Let's get technical with a range of tech/cyber related activities with the computing team.



### Paint on Canvas

A day of creativity - think 'BIG' and work on a large a scale project.



### Religious Studies Competition

Work on an entry to the NATRE Spirited Arts Competition.

### Wooden Puzzles

Spend a day in the DT workshop and design and create something to treasure.



**Lido**  
A classic day of fun at one of Cheltenham's favourite destinations.



### Making music

A fun day of competition with the Music team. Will you win the Battle of the Bands?

### Dragon's Den

Do you think you've got what it takes to design and market a winning chocolate bar?



### Mr Bashford's Big BBQ

Design a street food menu and packaging, then enjoy Mr Bashford's BBQ!



### Take to the stage

Work with Worcester Theatre professionals and the Drama team to perform a fantastic play in a day!



### Model Castles

Join the History team to create and build model castles.

### Outdoor Classroom

Spend the day outside helping to create a new outdoor learning space on the school field.



## Activities Week 2023 - In-school activities (page 1 of 2)

Dept.	In school activity choice	Days available (in blue)				
Art	<b>Clay Panels:</b> Students will work collaboratively to create hand-built clay panels inspired by nature and the man-made world for the courtyard. <i>(full day)</i>	M	T	W	T	F
Art	<b>Paint on Canvas:</b> Large scale canvas painting. <i>(full day)</i>	M	T	W	T	F
Business	<b>Enterprise Dragons Den:</b> The students will be designing a new chocolate bar for retail in shops. You'll need to decide on the logo, packaging, ingredients and pricing of the chocolate bar, before pitching your ideas to the 'DRAGONS!' <i>(half day)</i>	M	T	W	T	F
Computing	<b>Computer Science - 'Off the grid':</b> A range of tech/cyber related activities. <i>(half day)</i>	M		W	T	F
DT	<b>Wooden Puzzles:</b> Design and make a wooden puzzle using our new scroll saws. <i>(full day)</i>		T	W		F
Drama	<b>A 'Play in a Day':</b> Working with professionals from Worcester Theatres, create a drama production in a day. <i>(full day)</i>		T			F
English	<b>Create a newspaper:</b> Take on a role as a reporter, editor, writer, photographer or layout designer to create a newspaper about activities week at Bournside. <i>(half day)</i>	M	T	W	T	F
DT/Food	<b>Mr Bashford's Big BBQ:</b> Design a street food menu and packaging and then make sausages and burgers (incl. vegan). <i>(full day)</i>		T	W		F
History	<b>Castle Building:</b> Create a model castle. <i>(half day)</i>	M	T	W	T	F
Maths	<b>Trade game and egg drop:</b> An egg-citing team trade game raising 'money' to buy resources that can be used to protect your egg before it is dropped from a height. <i>(half day)</i>	M	T	W	T	F
MFL	<b>Languages Showcase:</b> A visit from GCHQ and a chance to learn Arabic and other languages they use. A translation competition. The chance to cook crêpes and tortilla española! As well as a carousel of other language-related activities, including learning to make a Spanish fan, making Mandarin characters out of paper, calligraphy to help your Chinese character writing and creating a children's story. <i>(half day)</i>	M	T	W	T	F
Religious Studies	<b>Spirited Arts Competition:</b> Students can make a creative piece of art/writing/poetry to do with anything they have learnt in Religious Studies that will be entered into the NATRE competition (which has Amazon voucher prizes of up to £100!) <i>(half day)</i>		T	W	T	
Music	<b>Battle of the Bands:</b> Students will work in small bands to learn a song and compete against the other groups. <i>(half day)</i>	M	T			



## Activities Week 2023 - In-school activities (page 2 of 2)

Dept.	In school activity choice	Days available (in blue)				
PE	<b>Multi-sports:</b> Exploring traditional and obscure sports from around the world. <i>(half day)</i>	M	T	W	T	F
Science	<b>Escape Room:</b> Students will need to work in teams to complete science investigations and tests, revealing clues and solving puzzles to allow them to escape. <i>(half day)</i>	M	T	W	T	F
PE	<b>Lido:</b> Pupils walk to Sandford Park to spend the day at the LIDO. £6 payable in advance. <i>(full day)</i>	M	T	W	T	F
Eco-Club	<b>Creating our outdoor classroom:</b> For our green-fingered pupils... Why not spend the morning or afternoon transforming the top corner of our field into our new outdoor classroom and bushcraft centre. Jobs include cutting back brambles, pruning trees, digging soil and planting. <i>(half day)</i>	M	T	W	T	F